

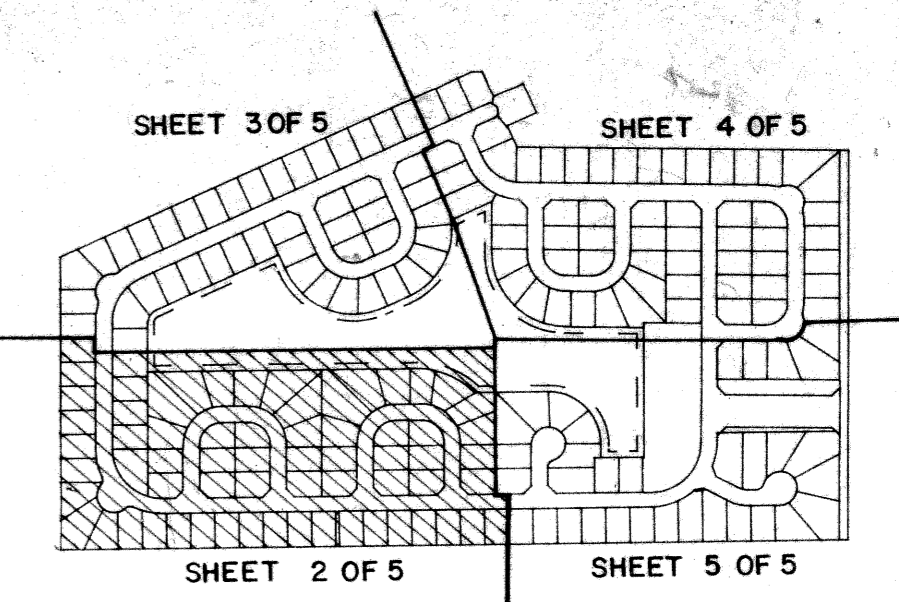
LEXINGTON HOMES ESTATES P.R.D.

BEING A REPLAT OF A PORTION OF LOTS 2 THROUGH 6 AND LOTS 11 THROUGH 15, INCLUSIVE, AS SHOWN ON THE PLAT OF THE FLORIDA FRUIT LANDS COMPANY'S SUBDIVISION NO. 2 RECORDED IN PLAT BOOK 1 PAGE 102. TOGETHER WITH THE VACATED ROAD RIGHT-OF-WAY LYING TO THE WEST, AS RECORDED IN O.R. BOOK 1841, PAGES 1960 THROUGH 1963, AT THE PUBLIC RECORDS OF PALM BEACH COUNTY, FLORIDA. SITUATED IN SECTION 25, TOWNSHIP 47 SOUTH, RANGE 41 EAST, PALM BEACH COUNTY, FLORIDA.

NOVEMBER 1989

SHEET 2 OF 5

0569-001

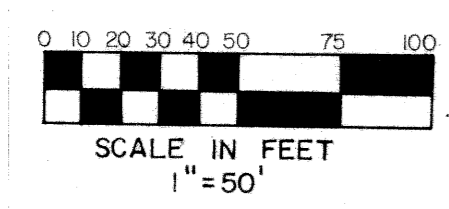
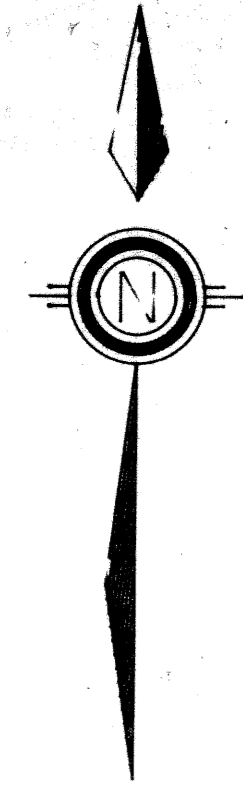


STATE OF FLORIDA
COUNTY OF PALM BEACH

THIS PLAT WAS FILED FOR RECORD THIS _____ DAY OF _____ AD, 1989 AND DULY RECORDED IN PLAT BOOK _____ ON PAGES _____ AND _____

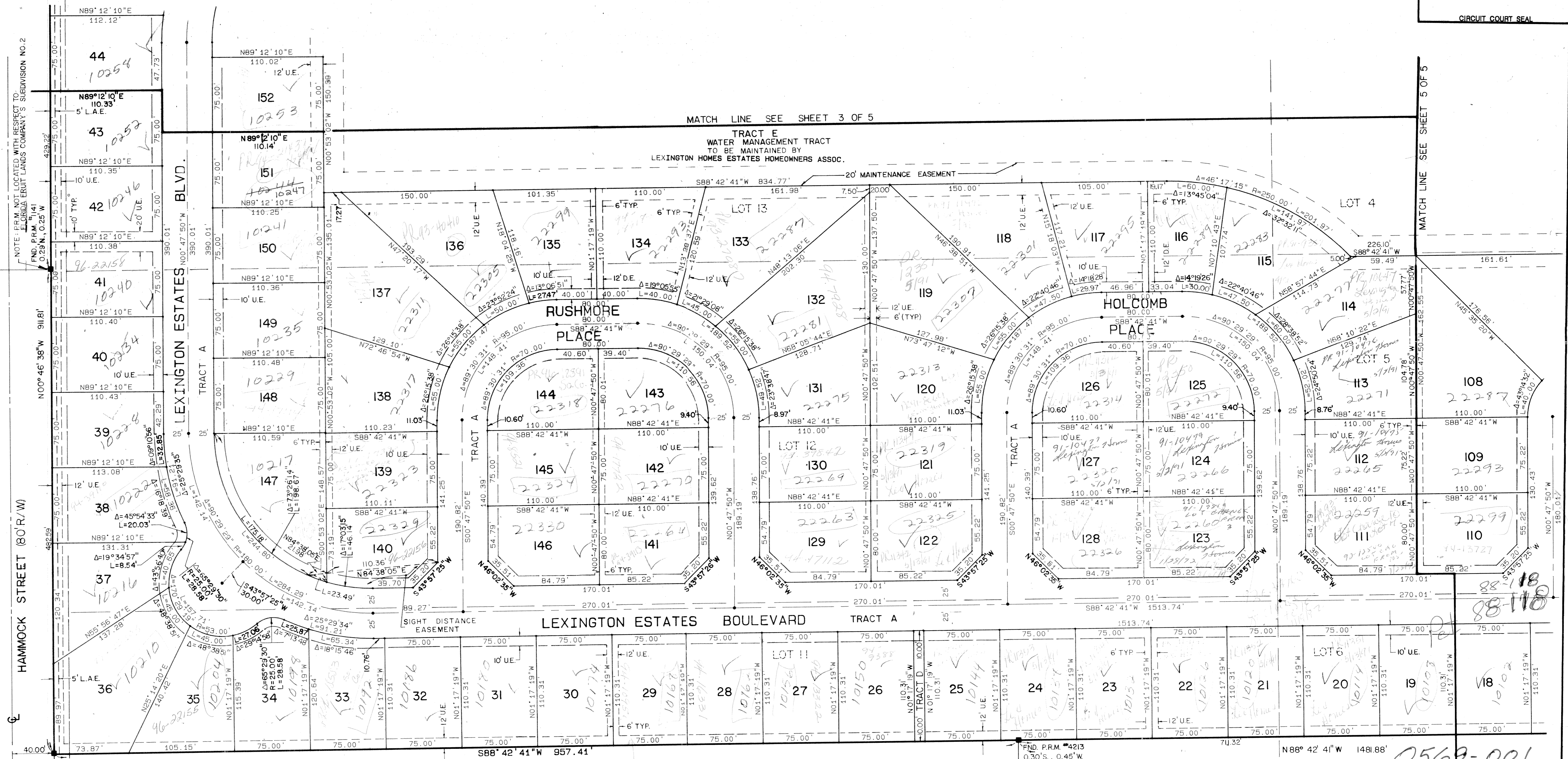
JOHN B. DUNKLE, CLERK
BY: _____, D.C.

CIRCUIT COURT SEAL



HOLIDAY CITY AT BOCA RATON SECTION 3 (PB. 30, PGS 189-190)

HOLIDAY CITY AT BOCA RATON SECTION 4 (PB. 33, PGS 9-10)



LEXINGTON HOMES ESTATES P.R.D. 79

65 B 10208

69 A 33433

88-118

SCHOOL BOARD PROPERTY WITHIN
FLORIDA FRUIT LANDS COMPANY'S SUBDIVISION NO. 2
(PB. 1, PG. 102)

ALLEGRO
(PB. 60, PGS 3-7)

STANLEY CONSULTANTS OF FLORIDA, INC.
ENGINEERS • PLANNERS • SURVEYORS
2000 LOMBARD STREET, WEST PALM BEACH, FL 33407 (407) 842-7444

DRAWN P.V. DATE NOV. 16, 1989
CHECKED R.B.P. SCALE 1" = 50'
DRAWING NO. 10061 D-12

LEXINGTON HOMES ESTATES P.R.D.
SHEET 2 OF 5

0569-001

65/79